

HYDROGEOLOGIC ATLAS OF WESTERN CANADA

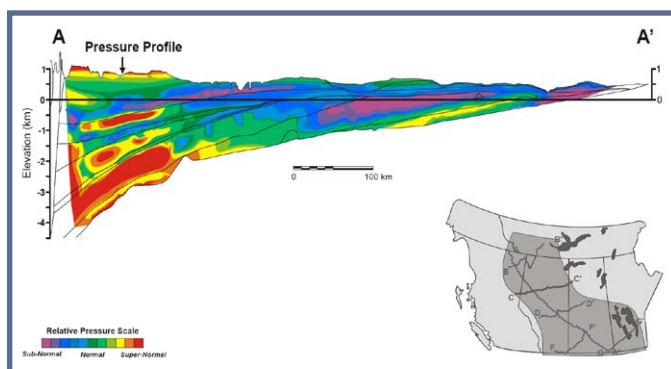
Introduction

The Hydrogeologic Atlas of Western Canada synthesizes a wealth of available information on fluids and serves as a hydrogeological and hydrochemical reference guide for the Western Canada Sedimentary Basin (WCSB). The atlas enhances exploration and development activities by illuminating the relationship between the flow of water and the migration and accumulation of petroleum. The atlas also provides an increased understanding of important contemporary basin processes.

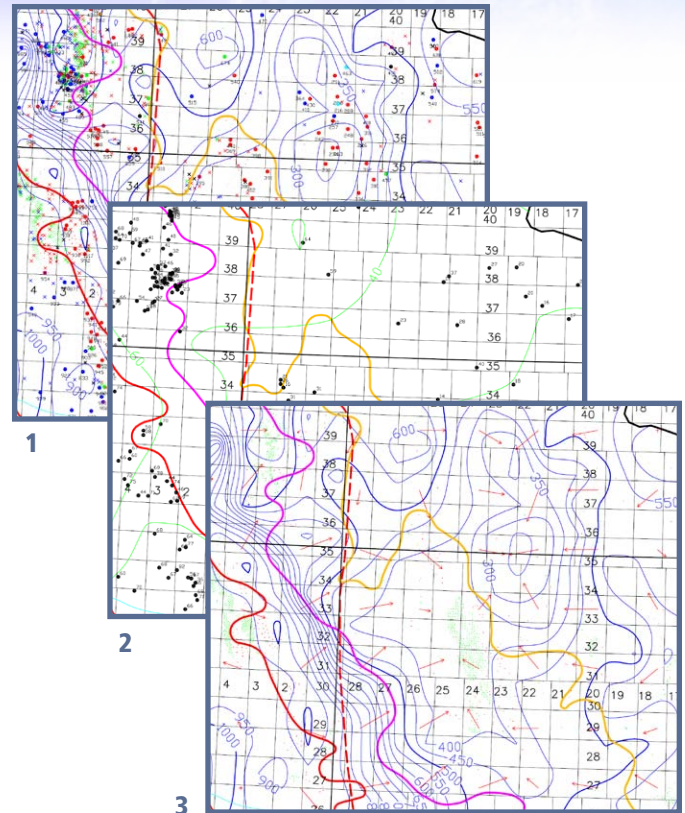
The atlas was developed by Rakhit Petroleum Consulting Ltd. (RPCL), a recognized world leader in the application of hydrodynamics for exploration and development.

The Hydrogeologic Atlas:

- Provides a standard reference tool for understanding hydraulic head, water chemistry and migration patterns, which can be used to validate data
- Identifies vertical and lateral fluid flow paths
- Characterizes sub-pressured, hydrostatically pressured and super-pressured zones
- Correlates the relationship between major hydrocarbon fields and basinal hydrogeology
- Enables aquifer characterization for the purposes of waste injection, CO₂ sequestration or water source identification
- Locates saline brines for mineral exploration



Alberta Foreland Basin Schematic derived from regional cross-sections



Excerpts from Mississippian Maps -
1. Hydraulic Head, 2. Total Dissolved Solids, 3. Force Vector

Deliverables

- Hydraulic head, total dissolved solids (TDS) and force vector maps for 23 stratigraphic units
- Contours highlighting regional trends within map units
- Force vector arrows showing calculated flow directions
- Six detailed cross-sections providing insight into basin-wide hydrodynamics
- Report, methodology and supporting illustrations
- Delivered digitally (PDF) on CD-Rom

Atlas Pricing

Digital Format - \$30,000 + GST

Contact Client Relations

300, 706 – 7 Avenue SW, Calgary AB, T2P 0Z1
T 403.269.3644 E info@canadiandiscovery.com