

Hydrodynamics of the Montney Formation

A Key Perspective



Introduction

Canadian Discovery Ltd. (CDL) is pleased to announce an update of its 2014 Montney Hydrodynamics Study (MRHS-II). With over 3,500 wells drilled since our last release, the Montney has become, by far, the largest contributor to new gas and now contributes 34% of WCSB gas production (approximately 7 bcf/d). Perhaps more importantly, liquids production from the Montney (oil, condensate and NGLs) has more than doubled from 70,000 to 150,000 bbl/d, significantly changing the economics of the play. However, all areas are not equal when it comes to liquids production, and significant new fairways are being delineated. As in the past, CDL Hydrodynamics can provide fresh insights on these trends, the controlling factors and potential new fairways.

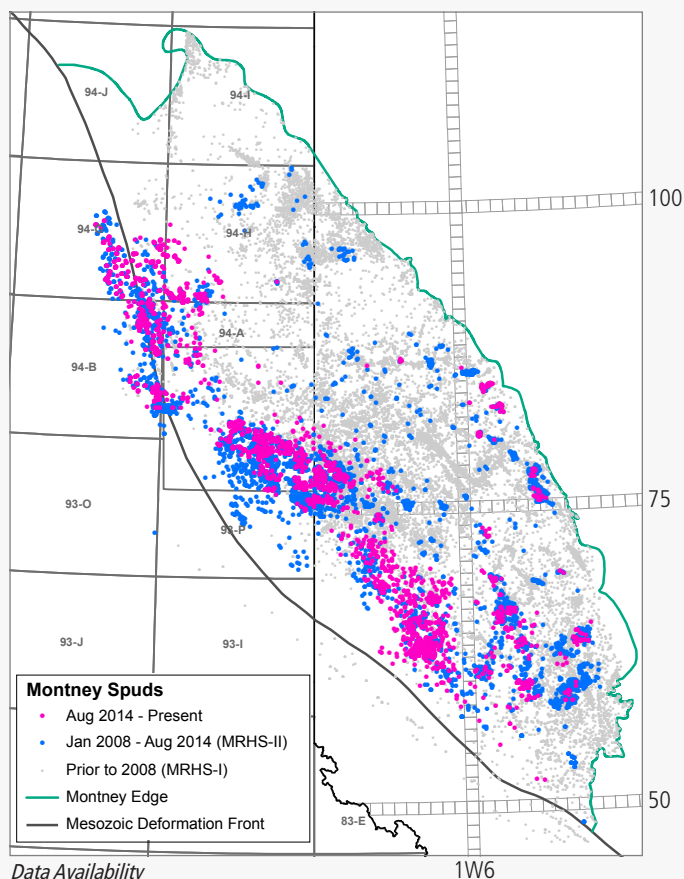
Why was hydrodynamics key in unlocking the play?

As with all resource plays, it's all about the rock. CDL Hydrodynamics, respected for over 30 years of innovation, integrates pressure, fluid chemistry and geothermics data. Our established work flow and quality data analysis of these key attributes enhances early mover advantage and provides critical insight for your existing acreage:

- » **Understand**—the variances in pressures and temperature across your area and offset lands and how this may impact recovery
- » **Predict**—extension of liquids-rich gas and oil fairways that are as yet under-recognized
- » **Reduce**—risk associated with acquisitions or entering new areas by having the big picture.

How will an update help me?

With over 8,500 wells drilled on the play to date and established land positions, one might think that the industry “has it all figured out.” However, the Montney continues to surprise and yield value. As the early industry focus evolved from dry gas to liquids-rich gas primarily through technological evolution, it was restricted to the higher pressure and temperature fairways. Continuing technological evolution, through increased frac stages, perf clusters and variations in proppant and fluid design, are opening up the ultra-liquids-rich gas, volatile oil and black oil fairways. The new data and learnings are key to understanding where and why these areas occur and their potential extents.



Deliverables

Focus on lower Montney and oil window. Major deliverables include:

- » Pressure/Depth Ratio Maps
- » Pressure/Elevation Graphs
- » Pressure Maps
- » Isotherm Map(s)
- » Geothermal Gradient Map
- » Temperature/Depth Graphs
- » Temperature/Pressure Graphs
- » Wet Gas Index Map
- » Condensate/Gas Ratio Map(s)
- » Play Fairway Maps
- » Illustrated Technical Report
- » Shapefiles and Excel Files

Purchase Details

Previous MRHS client	\$30,000
New client	\$42,500

Delivery: Fall 2018

Contact Client Relations
500, 622 – 5 Avenue SW, Calgary AB, T2P 0M6
T 403.269.3644 E info@canadiandiscovery.com

MRHSIII-V01-2018.10.4

Canadian 
Discovery Ltd.
www.canadiandiscovery.com